

# FRU List

This topic provides a list of field-replaceable units for the Phaser 840 Color Printer.

Changes to Tektronix products are made to accommodate improved components as they become available. It is important when ordering parts to include the following information:

- Component's part number
- Product type or model number
- Serial number of the printer

**Serial numbering.** Particular fields in the serial number indicate the modification level of the printer, the date of its manufacture and the sequence number of the printer produced on that day. The serial number is coded as follows:

*BLxxDMY*

*B* indicates the headquarter city of the manufacturing company, Beaverton.

*L* indicates the modification level of the printer, ranging alpha-numerically from 0 to Z.

*xx* alpha-numerically indicates the sequence of the printer among the printers produce on that day of manufacture, ranging from 01 to ZZ representing 1 to 1296 (the letters I and O are not used).

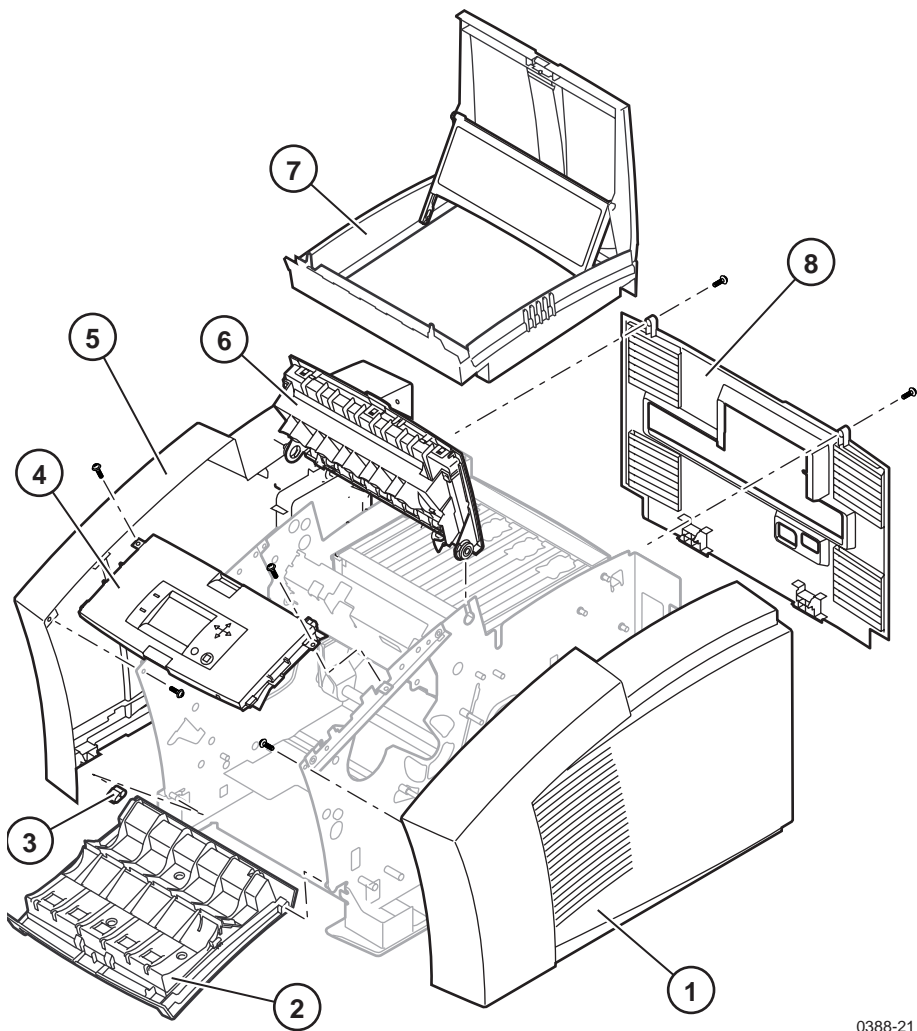
*D* alpha-numerically indicates the day of manufacture, ranging from 1 to X representing 1 to 31 (the letters I and O are not used).

*M* alpha-numerically indicates the month of manufacture, ranging from 1 to C representing 1 to 12.

*Y* numerically indicates the last digit of the year of manufacture, ranging from 0 to 9.

**Table 1 Cabinet FRUs**

Parts	Part number	Serial number		Qty	Name and description
		Effective	Discont'd		
1	200-4412-00 200-4591-00			1	Right cover Right cover, 840DP "Designer Edition"
2	200-4370-00 200-4598-00			1	Front cover, jam access door Front cover, 840DP "Designer Edition"
3	214-4814-00			1	Hinge, Front cover pivot
4	650-4028-00 650-4121-00			1	Front cover, control panel Front cover, control panel, 840DP "Designer Edition"
5	200-4365-00 200-4589-00			1	Left cover Left cover, 840DP "Designer Edition"
6	200-4375-00 200-4599-00			1	Exit cover Exit cover, 840DP "Designer Edition"
7	200-4367-00 200-4600-00			1	Top cover with inkload door Top cover with inkload door, 840DP "Designer Edition"
8	200-4377-00 200-4592-00			1	Rear cover Rear cover, 840DP "Designer Edition"

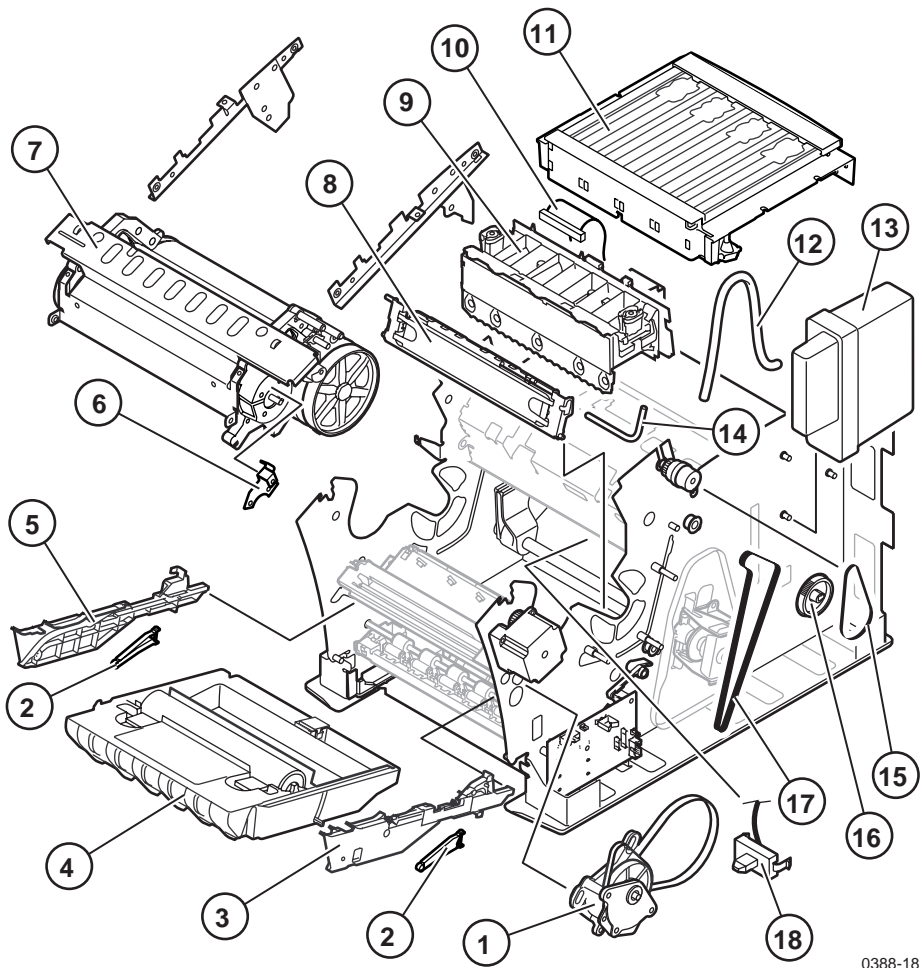


0388-21

**Figure 1 Cabinet FRUs**

**Table 2 Imaging FRUs**

Parts	Part number	Serial number		Qty	Name and description
		Effective	Discont'd		
1	650-4027-00			1	Y-axis pulley assembly
2	214-4651-01			1	Drum maintenance actuators, left and right
3	351-1051-00			1	Maintenance drawer guide, left
4	436-0383-00			1	Maintenance drawer
5	351-1053-00			1	Maintenance drawer guide, right
6	650-3617-00			1	Spring, transfix actuation. Part of 650-3617-00 Drum/Transfix Assy Kit
7	650-3617-00			1	Drum/transfix assembly. Part of 650-3617-00 Drum/Transfix Assy Kit
8	441-2137-00			1	Cap/wipe/purge assembly
9	650-3623-00			1	Printhead kit
10	174-3807-00			1	Cable, printhead data
11	650-4025-00			1	Ink loader
12	166-0714-00			1	Vacuum hose, rubber
13	147-0079-00			1	Vacuum/pump assembly
14	166-0713-00			1	Vacuum hose, rigid
15	650-3615-00			1	Head maintenance drive belt. Part of 650-3615-00 Belt Kit
16	650-3619-00			1	Pulley, head maintenance drive. Part of 650-3619-00 Gear Kit
17	650-3615-00			1	Head maintenance timing belt and ratchet clips. Part of 650-3615-00 Belt Kit
18	134-0265-00			1	Plug, Maintenance drawer life counter
	200-4379-00			1	Cover heat plate, printhead thermal duct

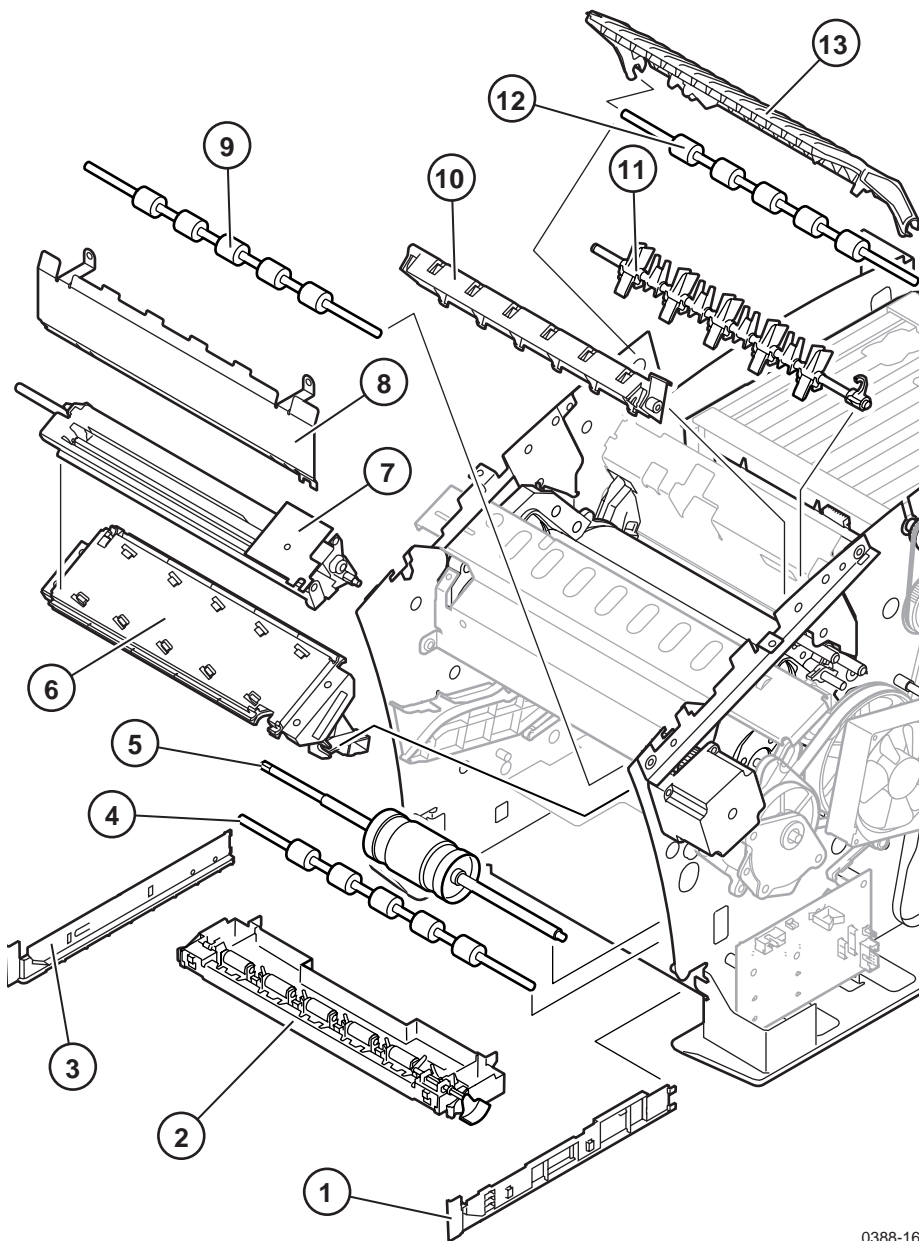


0388-18

Figure 2 Imaging FRUs

**Table 3 Paper path FRUs**

Parts	Part number	Serial number		Qty	Name and description
		Effective	Discont'd		
1	351-1045-00			1	Guide, media tray, right
2	351-1032-00			1	Guide, pick assembly
3	351-1046-00			1	Guide, media tray, left
4	401-0778-01			1	Lower feed roller
5	401-0813-00			1	Paper pick roller
6	119-5743-00			1	Drum/paper heater assembly
7	351-1047-00			1	Upper feed assy, top half, with circuit bd
	351-1048-00			1	Upper feed assembly, lower half
8	351-1035-00			1	Duplex paper guide
9	401-0784-01			1	Duplex roller
10	650-4026-00			1	Upper stripper finger assembly
11	386-7018-00			1	Lower stripper finger assembly
12	401-0781-01			1	Exit roller
13	351-1016-00			1	Guide, lower exit, pivoting



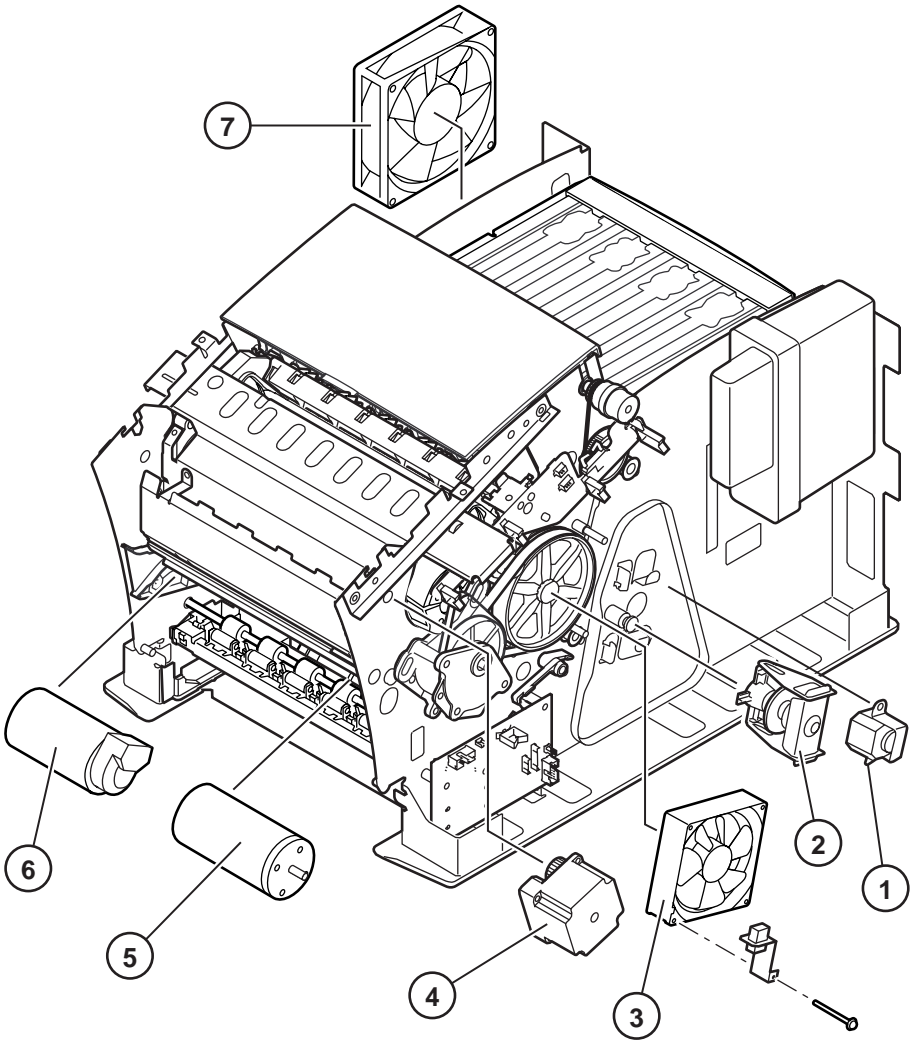
0388-16

Figure 3 Paper path FRUs

**Table 4 Motors and fans FRUs**

<b>Parts</b>	<b>Part number</b>	<b>Serial number</b>		<b>Qty</b>	<b>Name and description</b>
		<b>Effective</b>	<b>Discont'd</b>		
1	147-0086-00			1	X-axis motor with gear
2	650-3621-00			1	X-axis drive assembly
3	119-5876-00			1	Drum fan
4	147-0180-00			1	Paper path motor
5	147-0082-00			1	Y-axis motor
6	147-0108-01			1	Process motor, with encoder
7	119-5781-00			1	Main fan



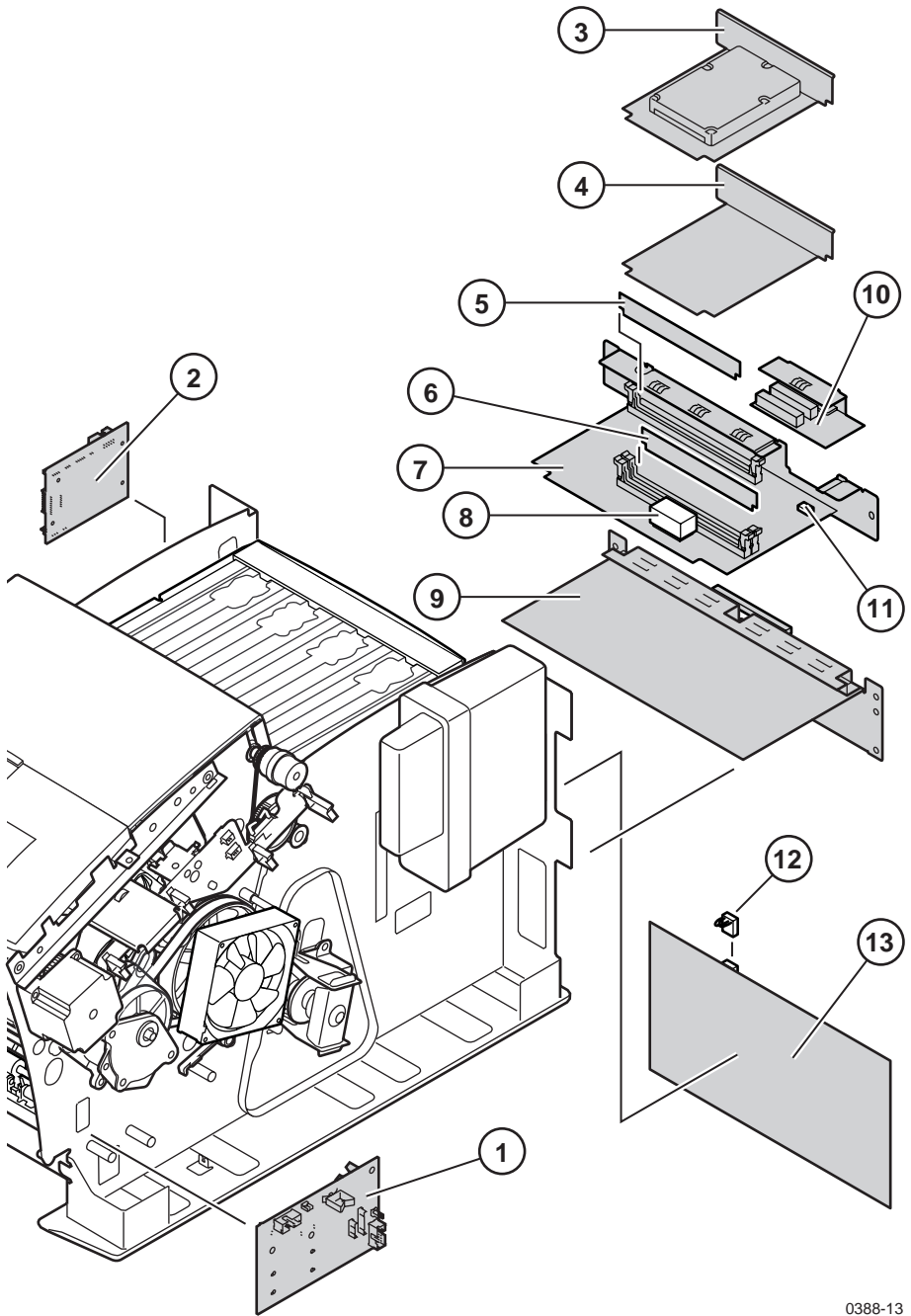


0388-14

Figure 4 Motors and fans FRUs

**Table 5 Circuit board FRUs**

Parts	Part number	Serial number		Qty	Name and description
		Effective	Discont'd		
1	671-4194-50			1	I/O board, right
2	671-4195-50			1	I/O board, left
3	671-4542-50 386-6997-00			1	ZDISK3, IDE hard drive, internal Blank cover plate (no hard drive)
4a	671-3994-00			1	100Base T Ethernet network card
4b	671-4034-00			1	LocalTalk network card
4c	671-3932-00			1	Token Ring network card
4d	386-6998-00			1	Blank cover plate, no network card
5	671-4576-50			1	<b>Masked</b> (avail Mar '99) Code ROM DIMM, English OS 1.36/PS 8.64/Eng 8.12/Net 10.50
	671-4575-53			1	Code ROM DIMM, English OS 1.38/PS 8.76/Eng 8.22/Net 10.62
	671-4674-00			1	Code ROM DIMM, Japanese Morisawa
	671-4675-00			1	Code ROM DIMM, Chinese Traditional
	671-4676-00			1	Code ROM DIMM, Chinese Simplified
	671-4677-00			1	Code ROM DIMM, Korean Hangul
	671-4748-00			1	Code ROM DIMM, Japanese Heisei
	671-4517-00			1	<b>Flash</b> Code ROM DIMM, Japanese Morisawa
	671-4571-00			1	Code ROM DIMM, Chinese Traditional
	671-4573-00			1	Code ROM DIMM, Chinese Simplified
	671-4574-00			1	Code ROM DIMM, Korean Hangul
	671-4744-00			1	Code ROM DIMM, Japanese Heisei
6	156-4800-00			1	32-Mbyte RAM DIMM
	156-4811-00			1	64-Mbyte RAM DIMM
7	650-3991-00			1	Main board
8	156-4691-00			1	Dallas Real Time Clock/NVRAM Module
9	650-4024-00			1	Power supply
10	671-4053-50 386-7074-00			1	SCSI riser board assembly Blank cover plate (no SCSI riser board)
11	163-1217-00			1	Boot ROM/Printer ID
12	131-1641-00			1	Jumper, +40 volt isolation
13	650-4029-00			1	Power control board

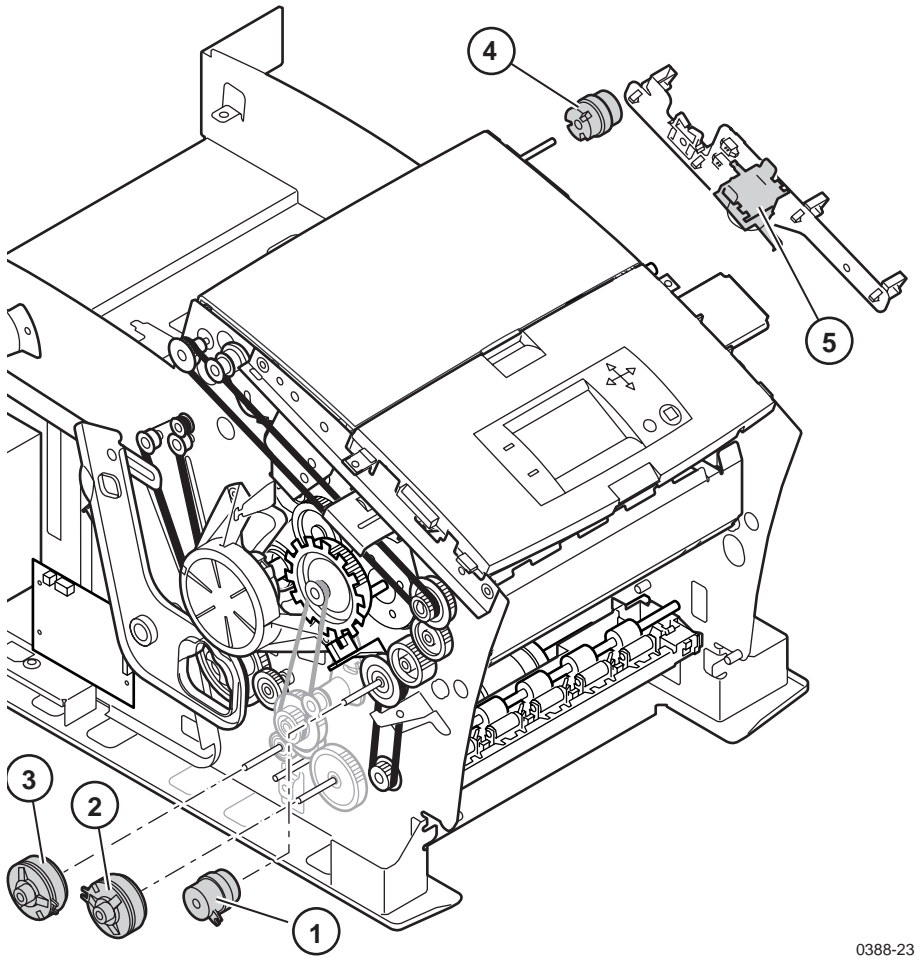


0388-13

Figure 5 Circuit boards FRUs

**Table 6 Solenoid and clutches FRUs**

Parts	Part number	Serial number		Qty	Name and description
		Effective	Discont'd		
1	401-0792-00			1	Electric clutch, upper feed roller, exit roller
2	401-0808-00			1	Electric clutch, pick roller
3	401-0807-00			1	Electric clutch, drum maintenance
4	401-0792-00			1	Electric clutch, cap/wipe/purge drive
5	148-0301-00			1	Solenoid, transfix assembly

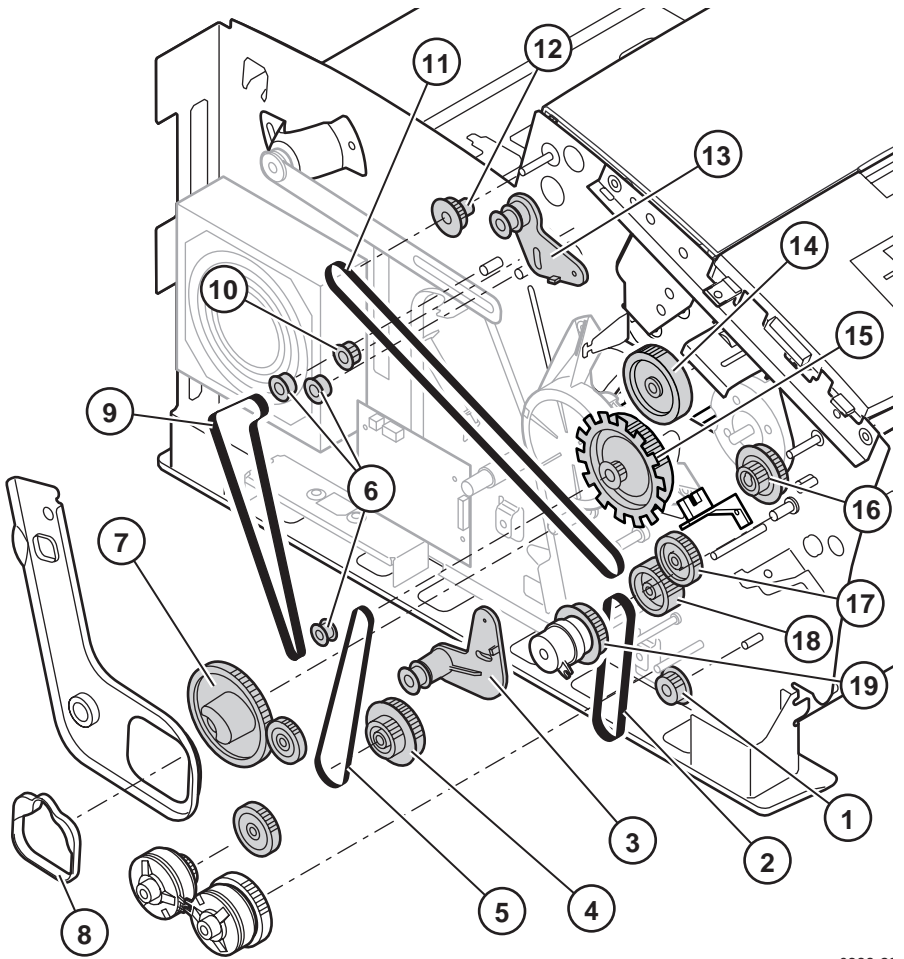


0388-23

**Figure 6 Solenoids and clutches FRUs**

**Table 7 Gears and belts FRUs**

Parts	Part number	Serial number		Qty	Name and description
		Effective	Discont'd		
1	650-3619-00			5	Pulley, lower paper transport. Part of 650-3619-00 Gear Kit
2	650-3615-00			2	Paper feed roller drive belt. Part of 650-3615-00 Belt Kit
3	650-3615-00			5	Tensioner, process belt. Part of 650-3615-00 Belt Kit
4	650-3619-00			1	Lower process, gear/pulley; Part of 650-3619-00 Gear Kit
5	650-3615-00			1	Process drive belt. Part of 650-3615-00 Belt Kit
6	650-3619-00			5	Roller, flat, head maintenance. Part of 650-3619-00 Gear Kit
7	650-3619-00			5	Head tilt cam gear. Part of 650-3619-00 Gear Kit
8	351-1015-00			1	Guide, head tilt
9	650-3615-00			2	Head maintenance timing belt and ratchet clip. Part of 650-3615-00 Belt Kit
10	650-3619-00			5	Pulley, drive, head maintenance. Part of 650-3619-00 Gear Kit
11	650-3615-00			1	Exit roller drive belt. Part of 650-3615-00 Belt Kit
12	650-3619-00			5	Pulley, exit drive. Part of 650-3619-00 Gear Kit
13	650-3615-00			1	Tensioner, exit drive belt. Part of 650-3615-00 Belt Kit
14	650-3619-00			5	Transfix gear, eccentric. Part of 650-3619-00 Gear Kit
15	650-3619-00			5	Gear, compound eccentric, flagged. Part of 650-3619-00 Gear Kit
16	650-3619-00			5	Duplex roller, gear pulley. Part of 650-3619-00 Gear Kit
17	650-3619-00			5	Paper path, idler 1. Part of 650-3619-00 Gear kit
18	650-3619-00			5	Paper path, idler 2. Part of 650-3619-00 Gear Kit
19	650-3619-00			5	Gear/pulley, upper feed roller, preheat entry. Part of 650-3619-00 Gear Kit



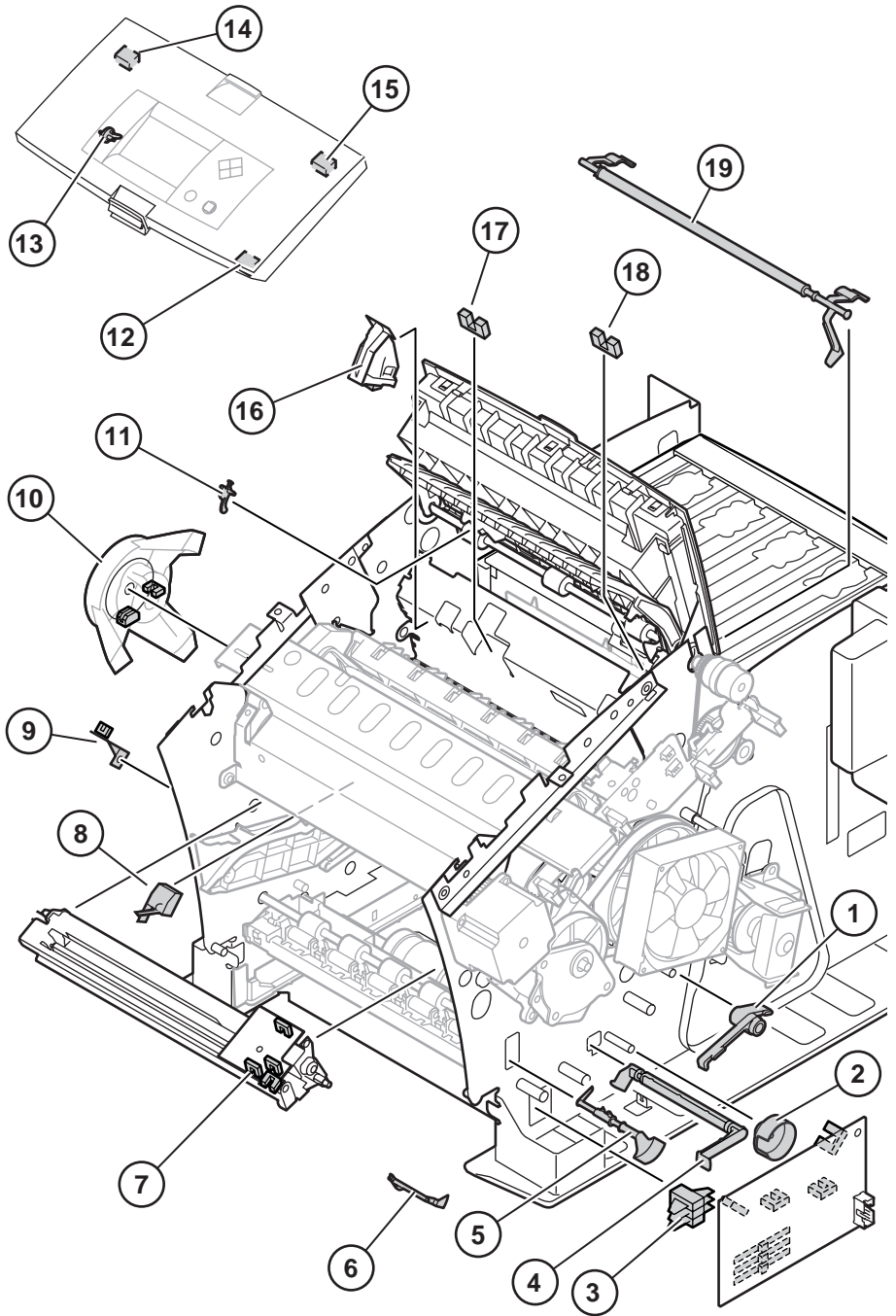
0388-22

Figure 7 Gears and belts FRUs

**Table 8 Sensors and flags FRUs**

Parts	Part number	Serial number		Qty	Name and description
		Effective	Discont'd		
1	650-3618-00			1	Cap/wipe/purge home flag. Part of 650-3618-00 Flag Kit
2	650-3618-00			1	Drum maintenance cam home flag. Part of 650-3618-00 Flag Kit
3	386-6902-00				Media tray sense flag assembly
4	650-3618-00			1	Paper out sensor flag. Part of 650-3618-00 Flag Kit
5	650-3618-00			1	Paper pick flag. Part of 650-3618-00 Flag Kit
6	650-3618-00			1	Handfeed sensor flag, inside front access cover. Part of 650-3618-00 Flag Kit
7	351-1047-00			1	Preheat entry/left edge sensor, A-size sensor, handfeed sensor. Part of 351-1047-00 upper feeder roller assy with circuit bd
8	119-5803-00			1	Preheater exit sensor assembly
9	119-4968-00			1	Process gear sensor
10	650-3622-00			1	Y-axis encode kit
11	650-3618-00			1	Transfix exit sensor flag. Part of 650-3618-00 Flag Kit
12	644-0927-00			1	Front cover open sensor. Part of 644-0927-00 Front cover, Control Panel
13	650-3618-00			1	Duplex paper sensor flag. Part of 650-3618-00 Flag Kit
14	644-0927-00			1	Duplex paper sensor. Part of 644-0927-00 Front cover, Control Panel
15	644-0927-00			1	Exit cover open sensor. Part of 644-0927-00 Front cover, Control Panel
16	119-5795-00			1	Drum temperature sensor assembly
17	119-5802-00			1	Transfix exit sensor
18	119-5802-00			1	Paper exit/tray full sensor
19	650-3618-00			1	Paper exit/tray full flag. Part of 650-3618-00 Flag Kit





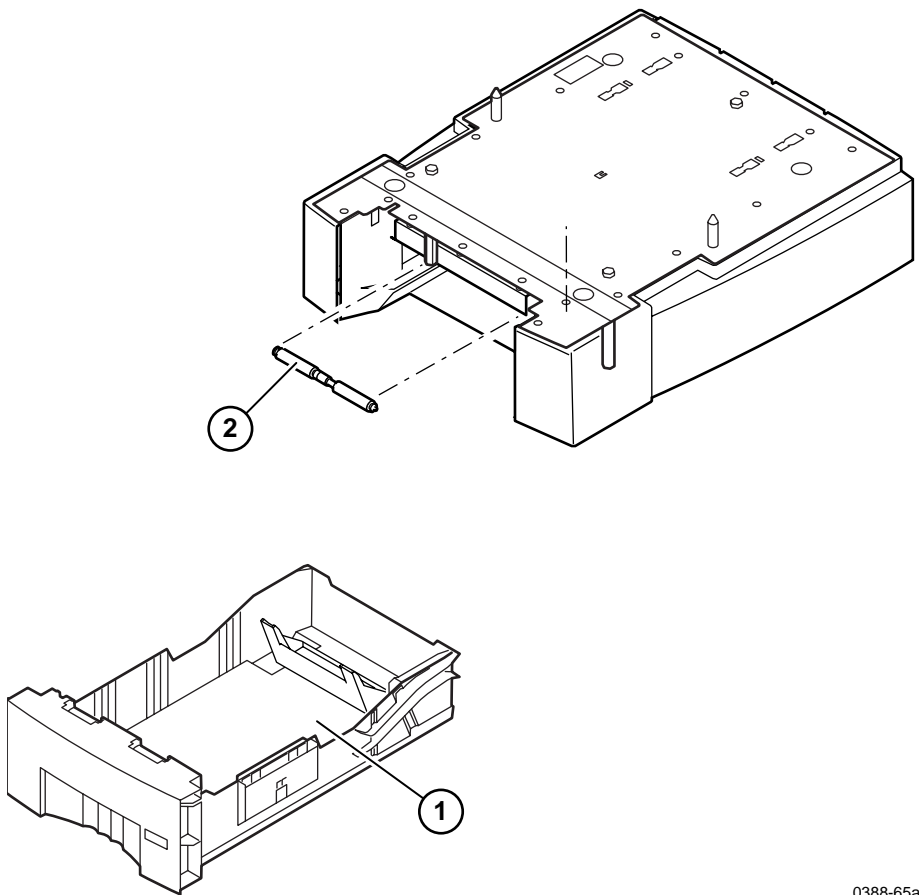
0388-15

Figure 8 Sensors and flags FRUs

# High-capacity Paper Tray Assembly

**Table 9 High-capacity Paper tray FRUs**

Parts	Part number	Serial number		Qty	Name and description
		Effective	Discont'd		
1	436-0328-00 436-0329-00			1	High-capacity paper tray, A-size High-capacity paper tray, A4-size
2	116-0272-00			1	Paper pick roller
	437-0467-00 437-0468-00			1	High-capacity paper tray assembly, A-size, includes tray High-capacity paper tray assembly, A4-size, includes tray



0388-65a

**Figure 9 High-capacity Paper Tray**

## Service tools

**Table 10 Service tools**

Parts	Part number	Serial number		Qty	Name and description
		Effective	Discont'd		
	003-1489-00			1	Y-axis encoder disk spacer tool
	003-1500-00			1	Y-axis belt tensioner
	006-7997-00			1	Grease, Rheolube 768
	012-1535-00			1	Cable, Diagnostics,PC, DB-9F to DB25M
	012-1543-00			1	Cable, adapter, diagnostics
	0031707-00			1	+40 volt service plug and jumper
	003-1749-00			1	Head-to-drum calibration tool kit
	003-1733-00			1	Head-to-drum spacer replacements
	063-3009-00			1	Service diagnostics diskette, SW
	650-3973-00				Tool kit - Torque Screwdriver - Encoder Alignment Tool - Head to Drum Gap Tool Assy. - Y-Axis Belt Tensioner tool - Hot Head Assy. - Hot Head Plug Assy. - Serial Adapter Cable - 40-v Service Plug - PC DB-9F to DB25M Cable - T-10 Torx Bit - T-15 Torx Bit - T-20 Torx Bit - T-25 Torx Bit
	003-1623-00			1	Spring removal tool
	650-3620-00				Hardware kit
	650-3616-00				Cable kit, printer wiring harnesses

## Supplies and accessories

**Table 11 Supplies and accessories**

Parts	Part number	Serial number		Qty	Name and description
		Effective	Discont'd		
	016-1595-00			1	Cleaning Kit
	016-1604-00			1	Black Ink, 3 pack
	016-1605-00			1	Cyan Ink, 5 pack plus 2 black sticks
	016-1606-00			1	Magenta Ink, 5 pack plus 2 black sticks

**Table 11 Supplies and accessories**

Parts	Part number	Serial number		Qty	Name and description
		Effective	Discont'd		
	016-1607-00			1	Yellow Ink, 5 pack plus 2 black sticks
	016-1608-00			1	Rainbow pack, 1 stick each color
	016-1582-00			1	Cyan Ink, 2 pack plus 1 black sticks
	016-1583-00			1	Magenta Ink, 2 pack plus 1 black sticks
	016-1584-00			1	Yellow Ink, 2 pack plus 1 black sticks
	436-0330-00 436-0395-00			1	Tray, Paper, A-size Tray, Paper, A-size, Z840DP "Designer Edition"
	436-0332-00 436-0396-00			1	Tray, Paper, A4-size Tray, Paper, A4-size, Z840DP "Designer Edition"
1	436-0336-00			1	Tray, High-volume transparency, A-size
1	436-0338-00			1	Tray, High-volume transparency, A4-size
	116-0838-00				Separator pad, paper
	016-1727-00				Maintenance cartridge kit; roller and counter
	436-0370-00				Waste ink tray
	016-1368-00				A-size paper, 500 sheets
	016-1369-00				A4-size paper, 500 sheets
	016-1724-00				Premium Transparency, 50 sheets, A-size
	016-1725-00				Premium Transparency, 50 sheets, A4-size
	016-1720-00				Standard Transparency, 50 sheets, A-size
	016-1721-00				Standard Transparency, 50 sheets, A4-size
	016-1194-00				A-size transparency pockets
	016-1130-00				A-size transparency sleeves
	016-1131-00				A4-size transparency sleeves
	013-0299-00				Parallel cable adapter, 1284C to 1284B
	070-9102-00				User Quick Reference Guide, English
	070-9102-10				User Quick Reference Guide, French
	070-9102-20				User Quick Reference Guide, Italian
	070-9102-30				User Quick Reference Guide, German
	070-9102-40				User Quick Reference Guide, Spanish

**Table 11 Supplies and accessories**

Parts	Part number	Serial number		Qty	Name and description
		Effective	Discont'd		
	070-9102-70				User Quick Reference Guide, Simplified Chinese
	070-9102-80				User Quick Reference Guide, Traditional Chinese
	070-9102-90				User Quick Reference Guide, Korean
	070-9102-05				User Quick Reference Guide, Russian
	061-4200-00				Z840 "Designer Edition" Manual Pack: Welcome Kit, User Guide, Driver CD-ROM,
	061-4201-00				Z840 "Designer Edition" Country Kit: Cleaning Kit, Setup Poster, Parallel Cable Adapter, ATM CD-ROM,
	070-9103-00				Advanced Topics and Troubleshooting Manual, English
	070-9103-10				Advanced Topic and Troubleshooting Manual, French
	070-9103-20				Advanced Features and Troubleshooting Manual, Italian
	070-9103-30				Advanced Features and Troubleshooting Manual, German
	070-9103-40				Advanced Features and Troubleshooting Manual, Spanish
	070-9103-70				Advanced Features and Troubleshooting Manual, Simplified Chinese
	070-9103-80				Advanced Features and Troubleshooting Manual, Traditional Chinese
	070-9103-50				Advanced Features and Troubleshooting Manual, Korean
	070-9103-05				Advanced Features and Troubleshooting Manual, Russian
	063-3126-01				Adobe Type Manager, CD SW
	063-3166-00				Drivers and Utilities, CD SW
	063-2627-00				Drivers and Utilities, Diskettes, English
	063-2627-10				Drivers and Utilities, Diskettes, French
	063-2627-20				Drivers and Utilities, Diskettes, Italian
	063-2627-30				Drivers and Utilities, Diskettes, German
	063-2627-40				Drivers and Utilities, Diskettes, Spanish
	063-2627-70				Drivers and Utilities, Diskettes, Simplified Chinese

**Table 11 Supplies and accessories**

Parts	Part number	Serial number		Qty	Name and description
		Effective	Discont'd		
	063-2627-80				Drivers and Utilities, Diskettes, Traditional Chinese
	063-2627-90				Drivers and Utilities, Diskettes, Korean
	063-2627-05				Drivers and Utilities, Diskettes, Russian
	161-0066-00				Power cord, Standard U.S., 115V
	161-0066-09				Power cord, Euro, 220V
	161-0066-10				Power cord, United Kingdom, 240V
	161-0066-11				Power cord, Australian, 250V
	161-0154-00				Power cord, Swiss, 220V
	161-0240-00				Power cord, Danish
	065-0580-00				Shipping carton kit

